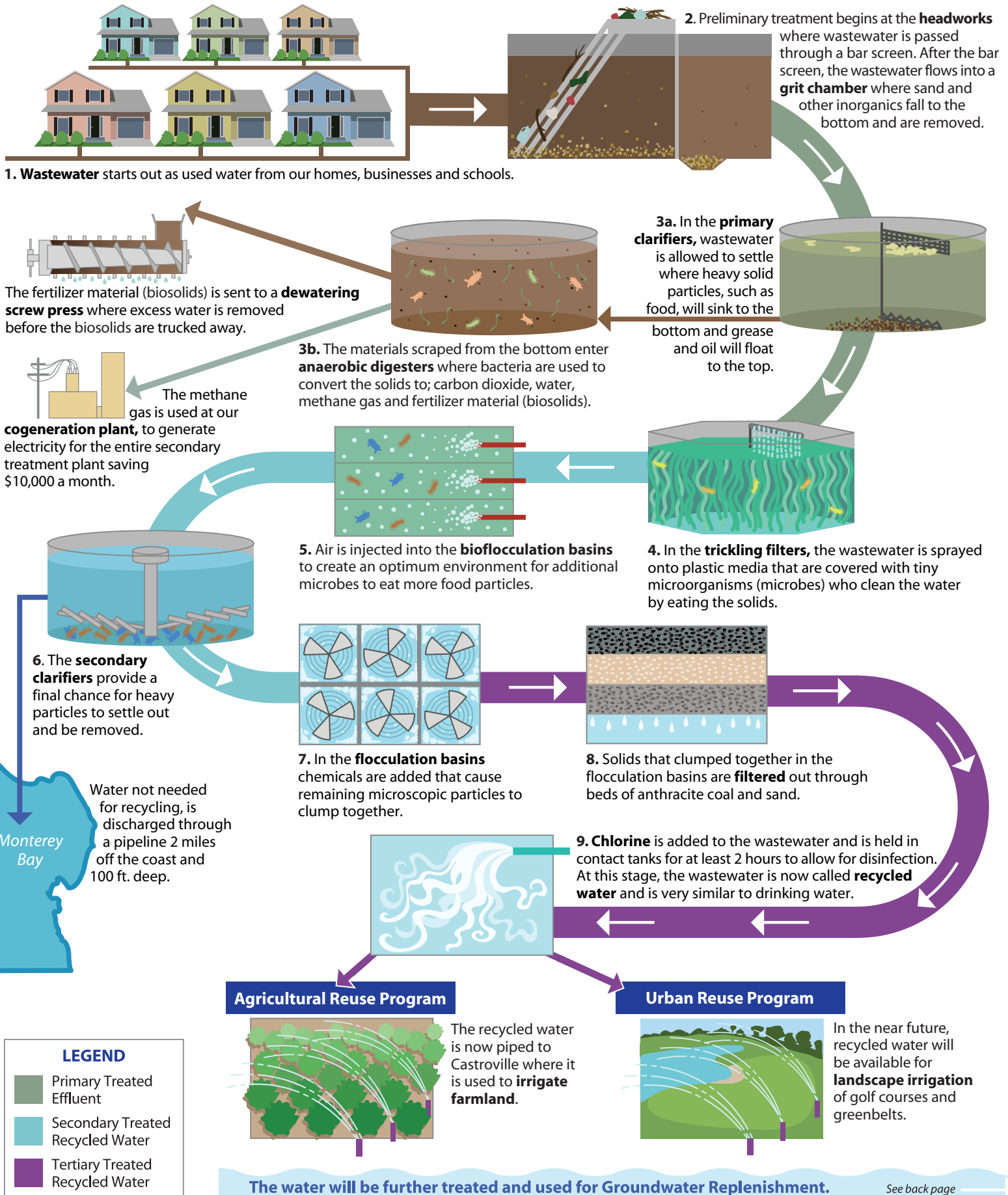


Monterey Regional Water Pollution Control Agency's Wastewater and Water Recycling Treatment Process



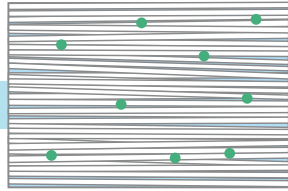


Monterey Peninsula Groundwater Replenishment Project

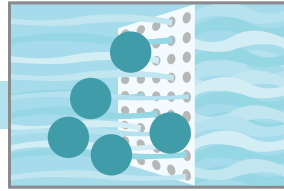
Providing A Safe And Sustainable Water Supply

Groundwater Replenishment Process

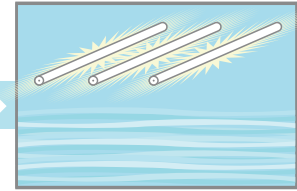
MRWPCA's recycled water will go through advanced purification processes.



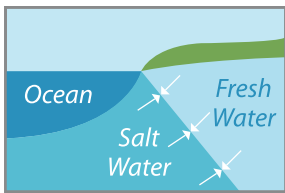
1. Microfiltration, also used by the food and bottled water industry, passes the water at a low-pressure through a membrane to filter out any remaining solid matter and bacteria.



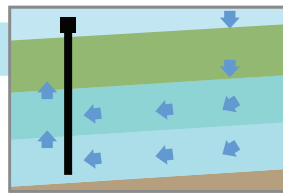
2. Used by many bottled water companies, **reverse osmosis (RO)**, directs the water under high pressure through thin membranes that eliminate remaining viruses, pharmaceuticals, and salts, creating near distilled water.



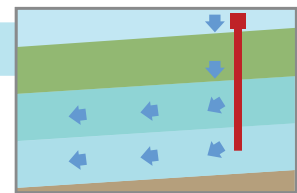
3. Ultraviolet light (UV) and Hydrogen Peroxide, are used to create a powerful oxidation reaction to break down any organic compounds similar to mother nature only much faster.



6. The **purified water** helps to prevent saltwater intrusion and overdraft while augmenting the local drinking water supply.



5. Water is pumped out and used **for drinking and other potable uses.**



4. Purified water is **injected into the aquifer.**

These programs help ensure high quality treated wastewater and our infrastructure.

Source Control Prevents Harmful Discharges into Wastewater System

The Source Control Program protects the treatment works by preventing harmful discharges into the sanitary sewer system. Commercial and industrial businesses are required to follow discharge regulations. Some are issued discharge permits. Businesses may be regularly inspected, flow and pollutants monitored, and pretreatment is required if necessary. One example of pretreatment is pH neutralization. Or in other circumstances, certain discharges could be prohibited.

Wastewater Overflow Prevention

To help prevent clogs in our wastewater infrastructure (pipelines, pumps, etc.), MRWPCA employs programs to keep clog-forming materials out of the sanitary sewer system. Some programs include working with restaurants, dentists, food packing industries, hair salons, and pet groomers. Restaurants, for

example, are required to properly install and maintain their grease traps and interceptors.

The Problem with Salt: Water Softener Salt Reduction Program

The purpose of the water softener salt reduction program is to educate our customers about the impacts of additional salt (sodium chloride) on our wastewater and to improve the quality of our recycled water. Recycled water is used for agriculture and landscape irrigation and the increase in salts from water softeners can harm local crops and plants. This program helps local residents identify the type of water softener they have and how they can consider other options to help us maintain our high quality recycled water. In some cases, we require large commercial customers to haul their water softener brine to our treatment plant. Every gallon of recycled water used saves our drinking water supplies.

Natural Hazard Mitigation Plan Reduces Serious Risks

The hazard mitigation plan was developed to reduce or eliminate the risk to life, property and the environment from natural and manmade hazards. The Local Hazard Mitigation Plan is a requirement of the Federal Emergency Management Agency.

A Green Home is a Safe Home: Household Solutions for a Safe Environment

Many common household products can be replaced with less harmful alternatives. By using these substitutes, you're not only free from worry about exposure to dangerous chemicals, but you'll be keeping many unwanted hazardous products out of the drain – and the environment.



Monterey Regional Water Pollution Control Agency

Mailing Address: 5 Harris Court, Building D, Monterey, CA 93940 • Phone: (831) 372-3367 or (831) 422-1001

www.mrwPCA.org • www.mpwaterreplenishment.org